


 = Verpackungseinheit / packing unit

Nr. / No.	D	L	
K6075 - 1,5 x 6	1,5	6	50
8		8	
10		10	
12		12	
14		14	
16		16	
K6075 - 2,0 x 5	2	5	
6		6	
8		8	
10		10	
12		12	
14		14	
16		16	
18		18	
20		20	
24		24	
28		28	
K6075- 2,5 x 6	2,5	6	
8		8	
10		10	
12		12	
14		14	
16		16	
18		18	
20		20	
24		24	
K6075 - 3,0 x 6	3	6	
8		8	
10		10	
12		12	
14		14	
16		16	
18		18	
20		20	
24		24	
28		28	
32		32	

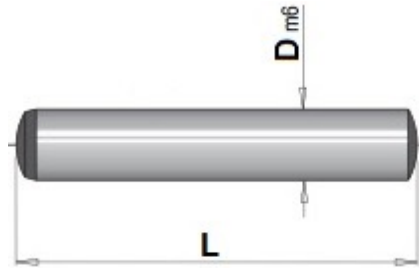
Nr. / No.	D	L	
K6075 - 4,0 x 8	4	8	50
10		10	
12		12	
14		14	
16		16	
18		18	
20		20	
22		22	
24		24	
28		28	
32		32	
36		36	
40		40	
K6075 - 5,0 x 10	5	10	20
12		12	
14		14	
16		16	
18		18	
20		20	
24		24	
28		28	
32		32	
36		36	
40		40	
45		45	
50		50	
60		60	
K6075 - 6,0 x 12	6	12	
14		14	
16		16	
18		18	
20		20	
24		24	
28		28	
30		30	
32		32	
36		36	


Nr. / No.	D	L	
K6075 - 6,0 x 40	6	40	20
45		45	
50		50	
55		55	
60		60	
80		80	
K6075 - 8,0 x 16	8	16	
18		18	
20		20	
24		24	
28		28	
32		32	
40		40	
45		45	
50		50	
55		55	
60		60	
70		70	
80		80	
K6075 - 10,0 x 20	10	20	
24		24	
28		28	
32		32	
36		36	
40		40	
45		45	
50		50	
55		55	
60		60	
70		70	
80		80	
90		90	
100		100	
K6075 - 12,0 x 24	12	24	
28		28	
32		32	
36		36	


**K6075 Zylinderstift h6**


**Dowel pin h6**


**Material: ~60 HRC**



 = Verpackungseinheit / packing unit

Nr. / No.	D	L	
K6075 - 12,0 x 40	12	40	20
45		45	
50		50	
55		55	
60		60	
70		70	
K6075 - 14,0 x 40	14	40	10
50		50	
60		60	

Nr. / No.	D	L	
K6075 - 14,0 x 70	14	70	10
80		80	
90		90	
100		100	
120		120	
K6075 - 16,0 x 32	16	32	
40		40	
50		50	
60		60	

Nr. / No.	D	L	
K6075 - 16,0 x 80	16	80	10
100		100	
120		120	
K6075 - 20,0 x 40	20	40	
50		50	
60		60	
80		80	
100		100	
120		120	