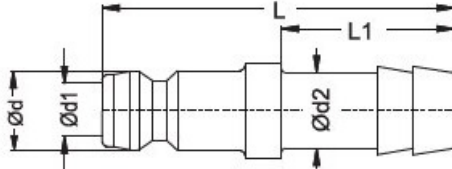


**K7130 Stecknippel mit Schlauchtülle,
mit freiem Durchgang**

**Plug-in bush,
without valve**



P= Stück / Normpackung // Pieces/ standard pack

Bei optionaler Bestellung bitte Kennbuchstaben hinzufügen:
For optional orders please add the options index end of the order no.:
(Beispiel/example: K7130-d-d2-Cr)

Material: Standardversion / Standard version

Grundkörper: Messing / Body: Brass

Ventil: Messing / Valve: Brass

Feder: Edelstahl / Spring: Stainless Steel

Temp: -20°C-+200°C (-40°F - +390°F)


Betriebsdruck / Working pressure: p (bar)

Optionen / Options:

Verchromt / Chrome plated – Index: -Cr

Vernickelt / Nickel plated – Index: -Ni

Edelstahl / Stainless Steel – Index: -S

| p (bar) | d1 (mm) | L1 (mm) | L (mm) | P | d (mm) | d2 (mm) |  Bestellnummer Order Number ohne Ventil / without Valve |
|------------|------------|------------|-----------|----|-----------|------------|---|
| 0-10 | 3,5 | 13,5 | 25 | 20 | 5 | 5 | K7130- 5- 5 |
| 0-15 | 6 | 23 | 39 | | 9 | 9 | K7130- 9- 9 |
| | | | | | | 13 | K7130- 9-13 |
| 0-20 | 9 | | 53 | | 13 | 13 | K7130-13-13 |
| | | 27 | 62 | | | 19 | K7130-13-19 |