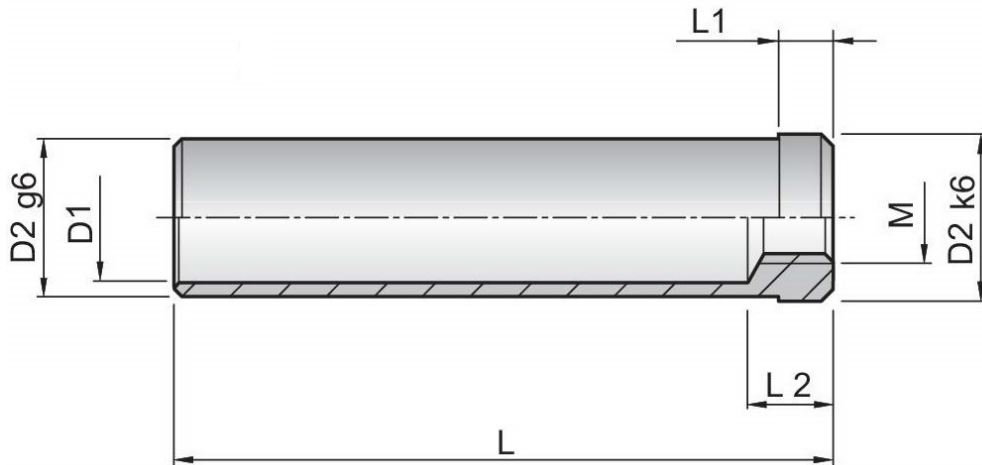


**Centring bush,**  
with two fitting diameters



Material: 1.7131 / 61-63 HRC

Best.Nr. Order No	D2	L	L1	L2	D1	M
K3065 - 20 x 030	20	30	6	14	16	M12
K3065 - 20 x 040		40				
K3065 - 20 x 050		50				
K3065 - 20 x 060		60				
K3065 - 20 x 080		80				
K3065 - 20 x 100		100				
K3065 - 20 x 120		120				
K3065 - 20 x 140		140				
K3065 - 20 x 160		160				
K3065 - 26 x 030		26				
K3065 - 26 x 040	40					
K3065 - 26 x 050	50					
K3065 - 26 x 060	60					
K3065 - 26 x 080	80					
K3065 - 26 x 100	100					
K3065 - 26 x 120	120					
K3065 - 26 x 140	140					
K3065 - 26 x 160	160					
K3065 - 26 x 180	180					
K3065 - 30 x 040	30	40	6	14	25	M12
K3065 - 30 x 050		50				
K3065 - 30 x 060		60				
K3065 - 30 x 080		80				
K3065 - 30 x 100		100				

Best.Nr. Order No	D2	L	L1	L2	D1	M
K3065 - 30 x 120	30	120	6	14	25	M12
K3065 - 30 x 140		140				
K3065 - 30 x 160		160				
K3065 - 30 x 180		180				
K3065 - 30 x 200		200				
K3065 - 30 x 220		220				
K3065 - 42 x 060	42	60	6	18	33	M12
K3065 - 42 x 080		80				
K3065 - 42 x 100		100				
K3065 - 42 x 120		120				
K3065 - 42 x 140		140				
K3065 - 42 x 160		160				
K3065 - 42 x 180		180				
K3065 - 42 x 200		200				
K3065 - 42 x 220		220				
K3065 - 42 x 240		240				
K3065 - 42 x 280	280					
K3065 - 54 x 080	54	80	6	18	43	M12
K3065 - 54 x 120		120				
K3065 - 54 x 160		160				
K3065 - 54 x 200		200				
K3065 - 54 x 240		240				
K3065 - 54 x 280		280				
K3065 - 54 x 320	320					