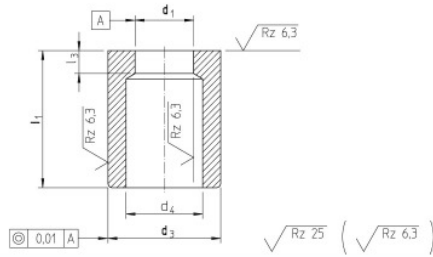


**4220 Schneidbuchse**  
ohne Bund

**Piercing die bushings**  
without collar



P= Stück / Normpackung // Pieces/ standard pack

Material: HWS,  
Sonderlängen, Sonderdurchmesser auf Anfrage.  
Sondermaterial: ASP 23/30/60 , CPM 9/10V,  
\* Vollhartmetall

Material: HWS,  
Special lengths and diameter available on request  
Special material: ASP 23/30/60 , CPM 9/10V,  
\* solid carbidediameter and special material available on request

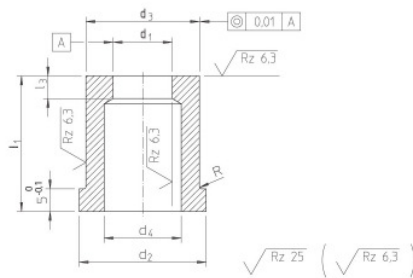
Bestellbeispiel / Order example: d1=2,0 mm; L1=25mm; HSS

Bestell-Nummer / Order number: 4220-2,0x25-HSS

d4	l3	P	d3 m5	Stufung Step	d1 +0,01	l1 ±0,05				Material
						19	25	30	32	
3,5	1,6	5	6,0	0,01	1,0 – 3,0					
5,0	2,0		8,0		1,0 – 4,0					
6,5	2,5		10,0		2,0 – 5,0					
7,5	3,0		13,0		3,0 – 7,0					
9,0			16,0		4,0 – 8,0					
11,0	4,0		19,0		5,0 – 10,0					
12,0			20,0		6,0 – 11,0					
15,0	5,0		22,0		9,0 – 13,0					
17,0			25,0		12,0 – 16,0					
22,0	6,0		32,0		13,0 – 20,0					
28,0			38,0		16,0 – 26,0					
30,0	8,0		40,0		21,0 – 29,0					
38,0			50,0		29,0 – 37,0					
42,0			55,0		35,0 – 41,0					

**4230 Schneidbuchse**  
mit Bund

**Piercing die bushings**  
with collar



P= Stück / Normpackung // Pieces/ standard pack

Material: HWS,  
Sonderlängen, Sonderdurchmesser auf Anfrage.  
Sondermaterial: ASP 23/30/60 , CPM 9/10V,  
\* Vollhartmetall

Material: HWS,  
Special lengths and diameter available on request  
Special material: ASP 23/30/60 , CPM 9/10V,  
\* solid carbide

Bestellbeispiel / Order example: d1=2,0 mm; L1=25mm; HSS

Bestell-Nummer / Order number: 4230-2,0x25-HSS

d4	l3	P	d2 +0,3	d3 m5	Stufung Step	d1 +0,01	l1 ±0,05						Material	
							19	22	25	28	30	32		35
3,5	1,6	5	9,0	6,0	0,01	1,0 – 3,0								
5,0	2,0		11,0	8,0		1,0 – 4,0								
6,5	2,5		13,0	10,0		2,0 – 5,0								
7,5	3,0		16,0	13,0		3,0 – 7,0								
9,0			19,0	16,0		4,0 – 8,0								
11,0	4,0		22,0	19,0		5,0 – 10,0								
12,0			23,0	20,0		6,0 – 11,0								
15,0	5,0		25,0	22,0		9,0 – 13,0								
17,0			28,0	25,0		12,0 – 16,0								
22,0	6,0		36,0	32,0		13,0 – 20,0								
28,0			42,0	38,0		16,0 – 26,0								
30,0	8,0		44,0	40,0		21,0 – 29,0								
38,0			54,0	50,0		29,0 – 37,0								
42,0			58,0	55,0		35,0 – 41,0								