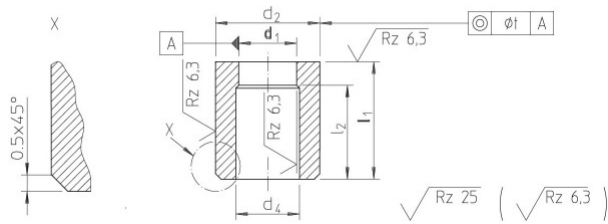


**4200 Schneidbuchse ohne Bund**  
DIN 9845, Form A

**Piercing die bushings without collar**  
DIN 9845, type A



Material: HWS,  
Sonderlängen und Sonderdurchmesser auf Anfrage  
Sondermaterial: HSS, ASP 23/30/60 , CPM 9/10V,  
\* Vollhartmetall

Material: HWS,  
Special lengths, diameter and special material  
available on request  
Special material: HSS, ASP 23/30/60 , CPM 9/10V,  
\* solid carbide

P= Stück / Normpackung // Pieces/ standard pack

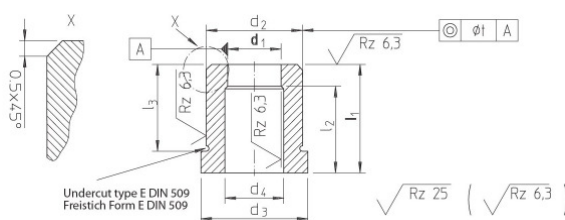
Bestellbeispiel / Order example: d1=2,0 mm; L1=20mm; HSS

Bestell-Nummer / Order number: 4200-2,0x20-HSS

P	d4 ± 0,1 = d1+	d2 = n6	L2	d1 = H8	Stufung d1 Step d1	L1 +0,5		Material	
5	0,3	5	18	1,0	0,1	20	28		
		6	17	1,1 – 2,0					
		7		2,1 – 3,0					
	0,5	8		3,1 – 4,0					
		10	16	4,1 – 5,0					
		12		5,1 – 6,0					
	0,7	15		6,1 – 8,0					
		18		8,1 – 10,0					
		22	15	10,1 – 12,0					
		26		12,1 – 15,0					
		1,0	30	-					15,5 – 18,0

**4210 Schneidbuchse mit Bund**  
DIN 9845, Form B

**Piercing die bushings with collar**  
DIN 9845, type B



Material: HWS,  
Sonderlängen und Sonderdurchmesser auf Anfrage  
Sondermaterial: HSS, ASP 23/30/60 , CPM 9/10V,  
\* Vollhartmetall

Material: HWS,  
Special lengths, diameter and special material available  
on request  
Special material: HSS, ASP 23/30/60 , CPM 9/10V,  
\* solid carbide

P= Stück / Normpackung // Pieces/ standard pack

Bestellbeispiel / Order example: d1=2,0 mm; L1=28mm; HSS

Bestell-Nummer / Order number: 4210-2,0x28-HSS

P	d3	d4 ± 0,1 = d1+	d2 k6	L2 (L1=20)	L3 (L1=20)	L2 (L1=28)	L3 (L1=28)	d1 H8	Stufung d1 Step d1	L1 +0,5		Material
5	7	0,3	5	18	16	26	24	1,0	0,1	20	28	
	8		6	17		25		1,1 – 2,0				
	9		7				2,1 – 3,0					
	10	8				3,1 – 4,0						
	12	0,7	10	16		24		4,1 – 5,0				
	14		12			5,1 – 6,0						
	17		15			6,1 – 8,0						
	20	1,0	18				8,1 – 10,0					
	24		22	15		23	10,1 – 12,0					
	28		26				12,1 – 15,0					
	32		30	-	-		15,5 – 18,0					
								0,5				
								-				