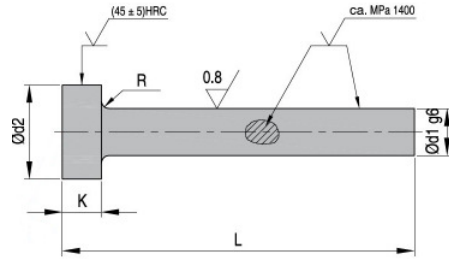


K4010 Auswerferstift,
mit zylindrischem Kopf, Typ AHX

Ejector pin,
with cylindrical head, type AHX



Material: WAS / gehärtet

Material: hot-working steel / hardened

Max. Temp: 500-550°C

DIN 1530 / ISO 6751

P= Stück / Normpackung // Pieces/ standard pack

Bestellbeispiel / Order example: d1=1,5mm; L=100mm

Bestell-Nummer / Order number: **K4010-1,5x100**

d1	L +2												P	d2 0/-0,2	K 0/-0,05	R 0/+0,2	
	080	100	125	160	200	250	315	400	500	630	800	1000					
1,0														20	3,0	1,5	0,2
1,5														10	4,0	2,0	0,2
2,0																	
2,2																	
2,5																	
2,7																	
3,0																	
3,2																	
3,5																	
3,7																	
4,0																	
4,2																	
4,5																	
5,0																	
5,2																	
5,5																	
6,0																	
6,2																	
6,5																	
7,0																	
7,5																	
8,0																	
8,2																	
8,5																	
9,0																	
9,5																	
10,0																	
10,2																	
10,5																	
11,0																	
12,0																	
12,2																	
12,5																	
14,0																	
16,0																	
18,0																	
20,0																	
25,0																	
32,0																	
													5	16,0			
														18,0	7,0	0,8	
														22,0			
														3	24,0	8,0	1,0
														32,0	10,0		
														40,0			